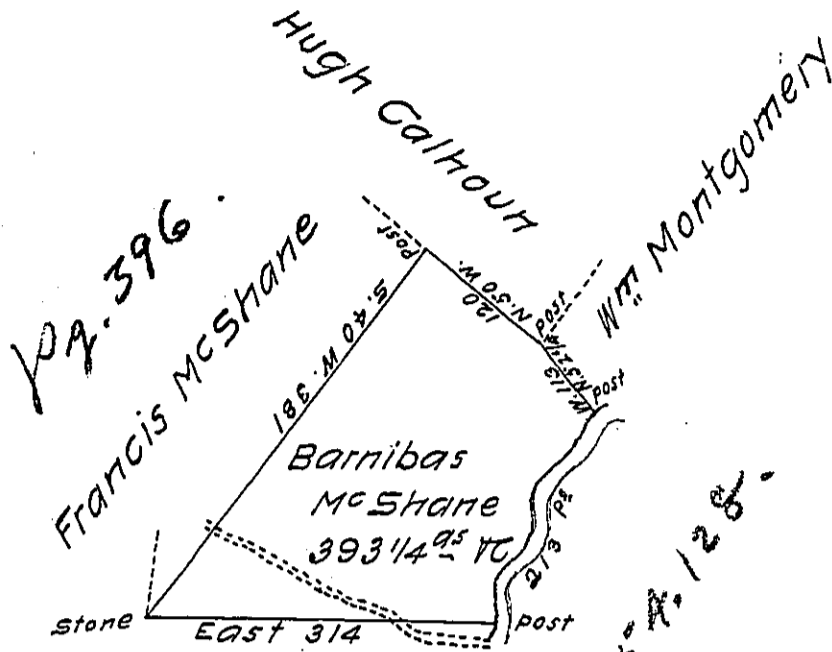


- Courses & distance
up Lehigh
- ✓ N. 30 W. 15.5
 - ✓ N. 44 1/4 E. 50
 - ✓ N. 77 E. 6.5
 - ✓ N. 34 1/4 E. 23
 - ✓ N. 25 1/2 E. 31
 - ✓ N. North 29
 - ✓ N. 49 3/4 E. 25
 - ✓ N. 61 3/4 E. 24
 - ✓ S. 79 3/4 E. 4



an old survey C.

A. 15. 252

A draft of a tract of land called _____ situate on the West side of Lehigh in the County of Luzerne containing three hundred and ninety three acres 1/4 & allowance surveyed for Barnibas McShane. on the 14th day of Nov^r 1793 by virtue of a warrant dated the 4th day ~~4th day~~ of March 1793.

by W^m Gray D.S.

To Daniel Brodhead Esq^r }
Surv^r Gen^l }

IN TESTIMONY that the above is a copy of the original remaining on file in the Department of Internal Affairs of Pennsylvania, made conformably to an Act of Assembly approved the 16th day of February, 1833, I have hereunto set my Hand and caused the Seal of said Department to be affixed at Harrisburg, this tenth day of May 1912

Henry Houch
Secretary of Internal Affairs.